

Search for articles...

All Collections > Indicators > Big 3 Squeeze Histogram & Labels & Multi-Time Frame Labels

Big 3 Squeeze Histogram & Labels & Multi-Time Frame Labels

Information and usage of the The Big 3 Squeeze Histogram and Labels

L

Written by Lorna St. George

Updated over a week ago

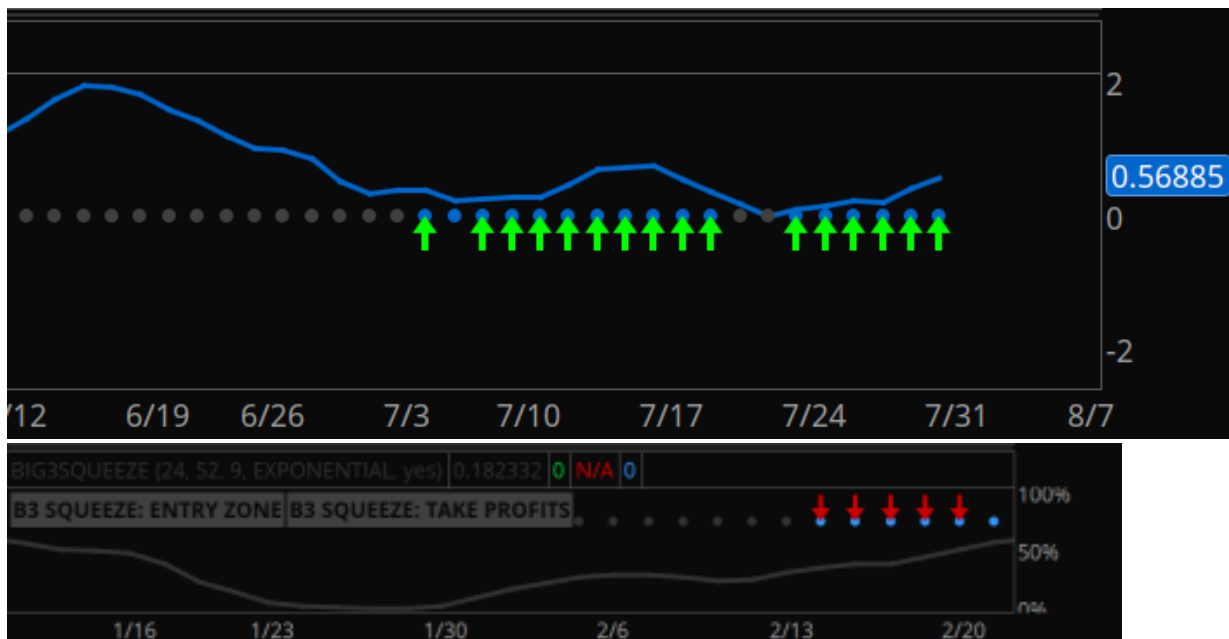
Big 3 Squeeze Histogram:

The Big 3 Squeeze Histogram is a modified version of the squeeze that incorporates the Big 3 Buy + Sell signals, with a custom momentum histogram and a custom "compression" setting.

What makes this different from the original Big 3 Indicator?

The Big 3 Squeeze combines the Big 3 buy and sell signals with a modified version of the squeeze. The Big 3 Squeeze answers the question of which way the squeeze will fire with green and red arrows. The labels help automate the process of figuring out whether or not your setup is A+. With the assistance of the bull target and bear target labels, you'll know when you should take profits.

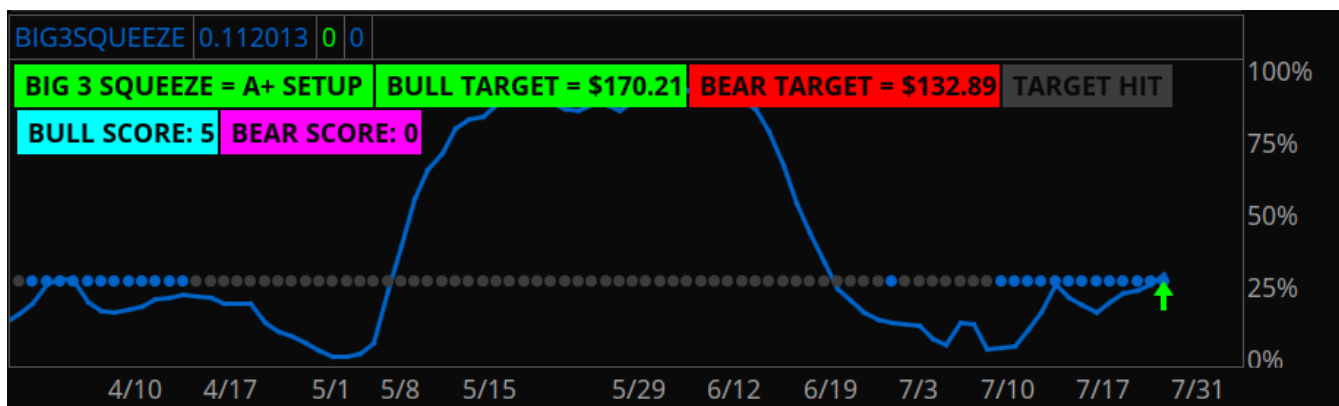
- **Blue dot = squeeze is printing**
- **Gray dot = no squeeze/squeeze has fired**
- **Green arrow = active squeeze + active Big 3 Buy signal (aka the "Big 3 Bull Squeeze")**
- **Red arrow = active squeeze + active Big 3 Sell signal (aka the "Big 3 Bear Squeeze")**
- (April 2024 update) We have added additional "structure" criteria, in an effort to generate even cleaner signals. Buy signals now require the **21EMA to be above the 50SMA**, and sell signals require the **21EMA to be below the 50SMA**.



Big 3 Squeeze Histogram Labels:

The squeeze histogram labels are designed to “automate” the process and eliminate the guesswork.

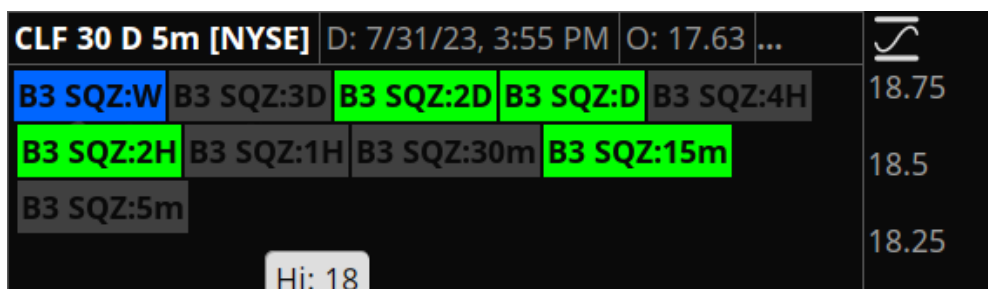
- **A+ Setup Label:** prints green/red label when an A+ setup is printing. A+ setup = B3 squeeze, B3 buy/sell signal, setting up at the entry-zone.
- **Bull Target Label:** plots current \$value of 3STD above 20EMA
- **Bear Target Label:** plots current \$value of 3STD below 20EMA
- **“Target Hit” Label:** prints green or red label when price hits +/- 3STD above 20EMA
- **Bull Score Label:** this label “ranks” a bullish setup based on 5 key elements, with a score of 5 being the best.
- **Bear Score Label:** this label “ranks” a bearish setup based on 5 key elements, with a score of 5 being the best.
- (April 2024 update) For the Big 3 buy + sell signals, we have added additional “structure” criteria, in an effort to generate even cleaner signals. Buy signals now require the **21EMA to be above the 50SMA**, and sell signals require the **21EMA to be below the 50SMA**.
- **The labels have been simplified as of April 2024 as well:**
 - the “Big 3 Squeeze: A+ Setup” label now reads as “A+ setup”
 - a new “Structure” label has been added (green = bullish structure, red = bearish structure, blue = neutral structure)
 - a new “Trailing Stop” label (green = price above trailing stop, red = price below trailing stop) has been added. The value shows the current value of the trailing stop
 - the “target hit” label has been removed



Multi Time Frame Big 3 Squeeze Labels:

The Big 3 Squeeze labels help us spot squeezes across all time frames. This is helpful for finding “nested squeeze” setups (when there is a Squeeze setting up on Weekly, Daily and Intra-day, or simply put Multiple time frames at the same time). The multi-timeframe labels for both the buy + sell signals and the Big 3 Squeeze have been updated to reflect the change in the signals that was added in April 2024 (shown above).

- **Blue label:** neutral squeeze
- **Green label:** bull squeeze
- **Red label:** bear squeeze
- **Gray label:** no squeeze



The Big 3 Slingshot Squeeze Signals:



This is a separate indicator that will plot the bull/bear slingshot signals on the chart.

- **Cyan arrow = Bullish slingshot squeeze**
- **Orange arrow = Bearish slingshot squeeze**

Due to the addition of the Slingshot signals, we also added the Slingshot label to the Big 3 Squeeze labels (highlighted above)

1. **Cyan = Bullish slingshot squeeze**
2. **Orange = Bearish slingshot squeeze**
3. **Grey = no current slingshot squeeze forming**

Did this answer your question?



 SIMPLERTRADING

[Click here for current site status](#)



